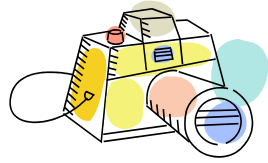


Name:

Grade:

MIDDLE YEARS WORKSHEET

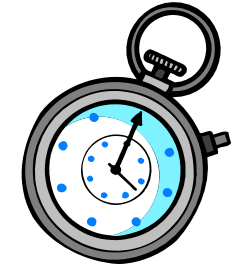


PHOTOGRAPHY SETTINGS WORKSHEET

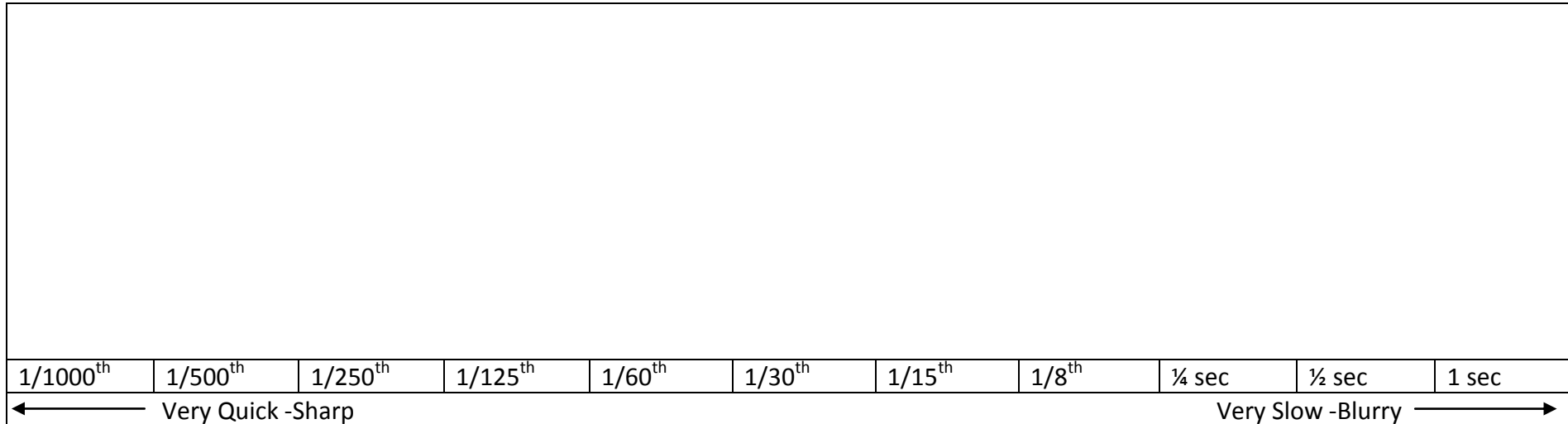
SHUTTER SPEED

Shutter Speed is how long the camera's shutter stays open and the amount of light is let in.

- The quicker the snap, the faster the shutter speed and smaller the number (fraction) the clearer the image.
- The longer the snap, the slower the shutter speed and larger the number (whole number) the more blurry the image can be.



Shutter Speed Scale & Motion



Activity: Draw 1 stick figure running on the side of the shutter speed scale the motion would be **frozen**, draw 2 stick figures close together in the middle and draw 3 stick figures close together on the other side of the scale to show **blurry movement**.

The shutter speed works in relation to the aperture.